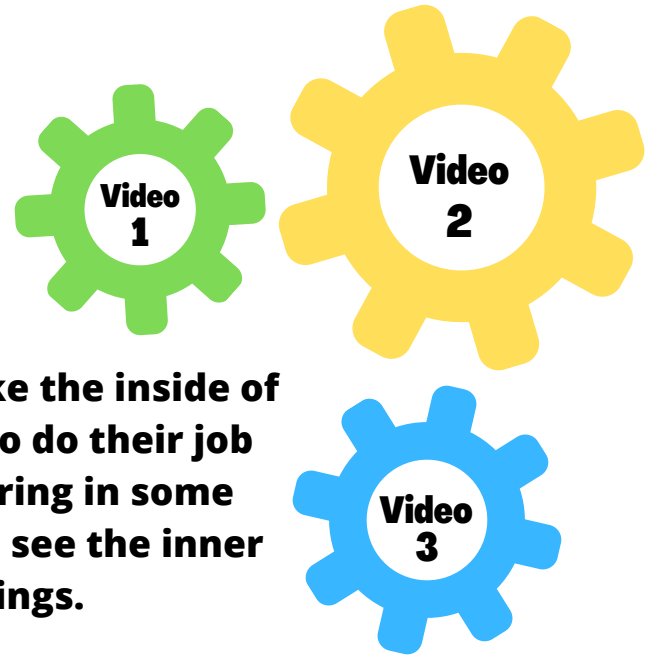


Unit Four: Working Together as a Group

We've been exploring emotions through different theater activities, and the following theater exercise is great for large group collaboration.

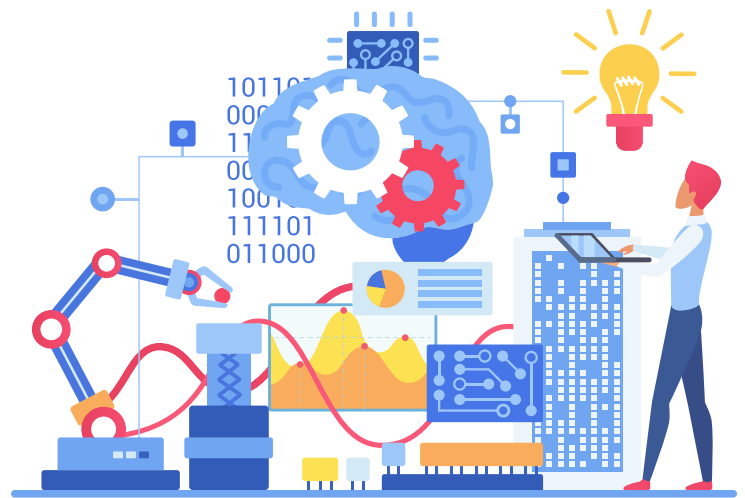
Machines Exercise

First, click the gears to the right to see embedded videos how this exercise works.



Let students know working together is a lot like the inside of a machine. There are lots of parts that have to do their job right for the machine to work well. If able, bring in some working and broken machines for students to see the inner workings; gears, cogs, levers and springs.

After discussing machines, tell students they now have a chance to work together to become machine parts themselves, though in order to do this they will need to keep their bodies controlled, and work together safely and respectfully. It might be best to show them some of the videos provided, so they can see people doing the machine activity together correctly and safely.



Rube Goldberg Machines

Machines typically serve beneficial purposes, but Rube Goldberg specialized in absurd and not-very-useful contraptions. Click on the text below to see some Rube Goldberg inspired creations!

[OK Go Music Video](#)

[World's Largest Rube Goldberg Machine](#)

[The Lunch Feeding Contraption](#)

Next, begin facilitating students creating their own group machine. Once they've shown they can safely create machines together, see if you can "adjust" the speed of the machine, or use your imaginations to see what a candy making or rainbow creating machine might look like. *How would a sad machine move, look and feel like? A happy or mad machine?*